

## Tufted Capuchin (*Sapajus apella*) Faecal Scoring Chart



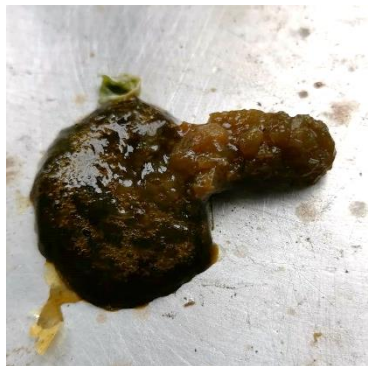
Type 1



Type 2



Type 3



Type 4



Type 5



Type 6



Type 7

**Type 1:** Separate hard pellets, round or oval in shape. Primarily dry. No residue left after removal.

**Type 2:** Firm but not hard. Fecal matter is heavily segmented and leaves little residue on ground.

**Type 3:** Soft and log like with little to no segmentation. Holds its form when removed and leaves residue.

**Type 4:** Very moist and may not hold together. May be inconsistent in form. Still vaguely log shaped. Leaves residue.

**Type 5:** Very moist. Presents in piles instead of distinct logs but has a distinct shape.

**Type 6:** Has texture but cannot hold a vertical shape. Some splattering may occur.

**Type 7:** Watery and presents as a flat puddle. Heavy splattering likely to occur.