

Manure Score Card: Consistency

The consistency of fresh cow manure is scored in two ways: by eye and by pressing a boot into the manure.



Score 1



Watery manure that is barely recognizable as manure. This manure comes from cows that are very sick.

Score 2



A thin porridge that is recognizable as manure. When manure lands on a hard surface, the splatter goes a long way. This occurs when pasturing young rich grass and when there is some imbalance in the ration.

Score 3



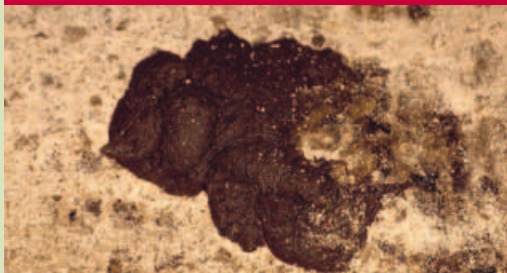
A thick porridge forming a pile of 2-3 cms depth. A soft plopping sound can be heard when the manure lands. Boot test: when the boot is lifted there is no footprint left in the pile, and the manure doesn't stick when lifting the boot. This is the ideal consistency for manure and the ration is visibly digested.

Score 4



The manure is thick and makes a heavy plopping sound when landing. It is well formed and stacks in rings. The height is a fingers length or more. Boot test: when the boot is lifted the manure sticks to the sole and a footprint is left behind. This indicates that there is an imbalance in the ration. For dry cows and heifers this manure is acceptable, but always check the composition of the ration anyway.

Score 5



Stiff balls of manure (similar to horse manure). Boot test: an impression of the sole is left on the top of the manure. Dry cows and heifers often pass this type of manure. In milking cows, check that the ration is balanced and adjust accordingly. Check individual cows for disease (ketosis).