



Giraffa Camelopardalis Faecal Scoring System

1

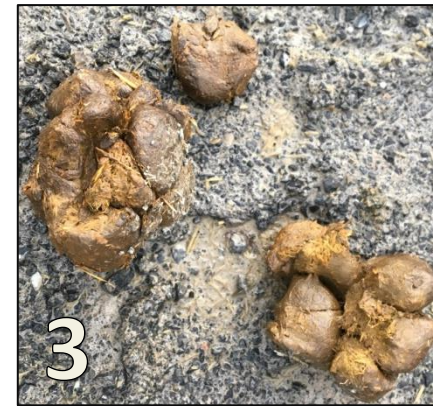


Score 1 (Optimum) – Leaves the body as individual pellets. With one thinner and slightly pointed end and the other being thicker and concave in shape, it is clear how the pellets fit together inside the colon. Firm, relatively dry and leaves no residue on the ground when picked up.



2

Score 2 – Clear that individual pellets were formed in the colon but appear moist and misshapen. Holds form when picked up but pellets tend to stick together.



3

Score 3 – Separate pellets still apparent but fall from the body in small clusters. Very sticky to touch but still holds form when picked up.



4

Score 4 – Some segregation of the pellets is clear but leaves the body in large clumps and cannot be teased apart easily. Much wetter but still holds form when picked up.



5

Score 5 – Pellets are melded together and hardly recognisable as individual units. Very loose in texture, does not hold form when picked up and leaves a slight residue on ground.



6

Score 6 – Requires effort to expel from the body and leaves as one large flat mass. Has texture but no defined shape, leaves a very sticky residue and disintegrates when picked up.