



Zoológico
de Cali



Giant otter neonate (*Pteronura brasiliensis*) Faecal Scoring Chart



Type 1



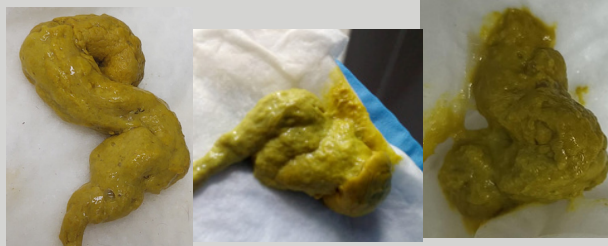
Type 1.5



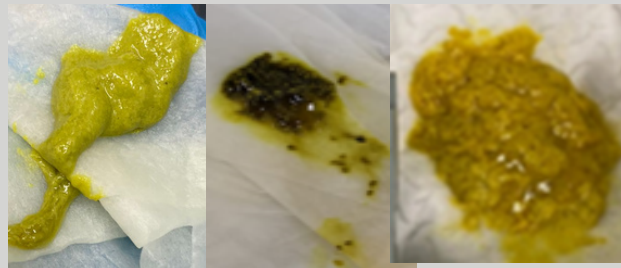
Type 2



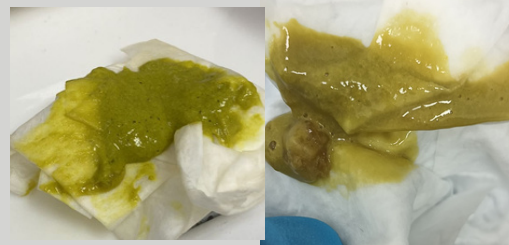
Type 3



Type 3.5



Type 4



Type 5

Note: The photos were taken of hand-reared giant otter pups, in which a change in fecal color from green to yellow was observed as artificial milk formula was included. It is considered ideal to find feces type 1.5 to type 3.

Type 1: Separate hard pellets, round or oval in shape. Primarily dry.

Type 1.5: Firm but not hard. Pellets form one fecal unit that is moist with distinct segmentation.

Type 2: Soft and log-like in shape, moist dough-like consistency, segmentation is not present, but it is possible to find small lumps.

Type 3: Stools are quite moist and easy to dissolve to the touch, present defined shape and is still possible to find small lumps.

Type 3.5: There is a little more consistency and portions may be formed. A mushy stool that may occur in blobs.

Type 4: Pasty in appearance, with texture but does not maintain any shape.

Type 5: Watery, almost liquid and without texture.