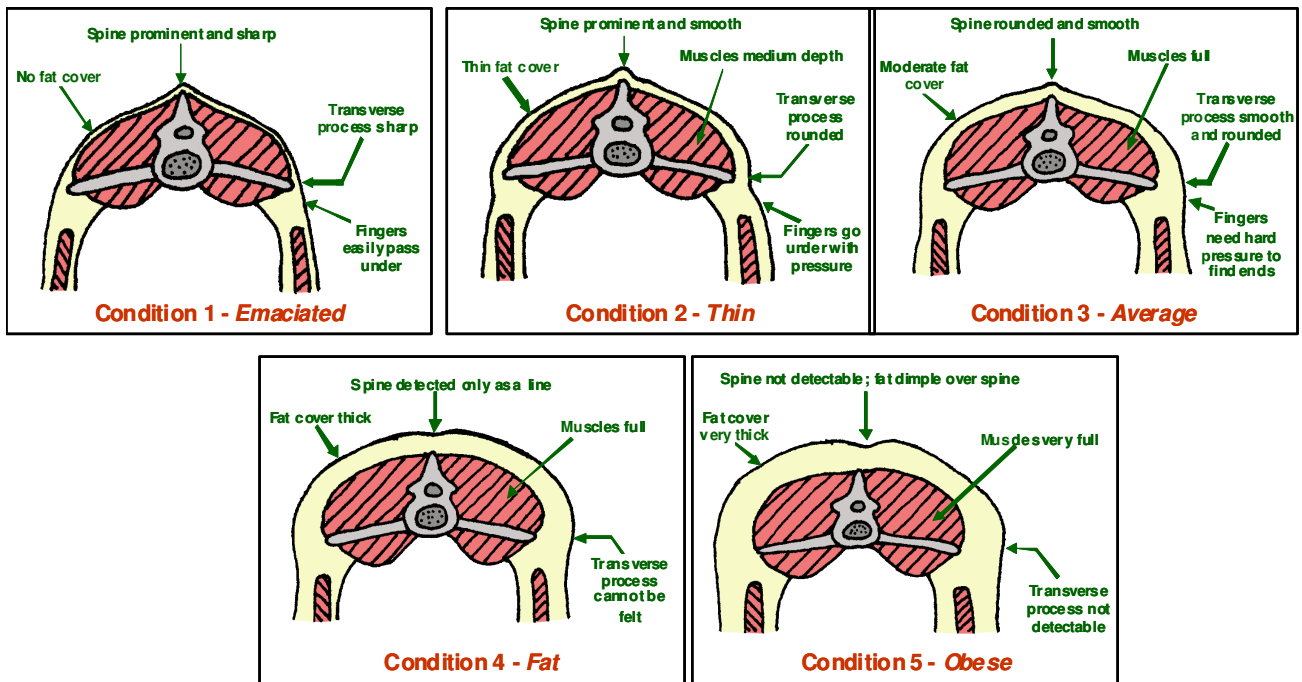


### 1.4.3.2 – Domestic Sheep and Goats



Thompson and Meyer (1994) *Body Condition Scoring of Sheep*, Oregon State University extension service, US Department of Agriculture

### Sheep and Goats – “The Condition Scores”

Score	Backbone	Short ribs	Eye Muscle
1	Prominent and sharp	Ends are sharp and easy to press between, over and around	Thin, the surface tending to feel hollow
2	Prominent but smooth	Smooth well-rounded ends- can feel between, over and around each smoothly	Reasonable depth with the surface tending to feel flat
3	Can be felt but smooth and rounded	Ends are smooth and well covered - firm pressure necessary to feel under and between short ribs	Full and rounded
4	Detectable with pressure on the thumb	Individual short ribs can only be felt with firm pressure	Full with a covering layer of fat
5	Can be felt with firm pressure	Cannot be felt even with firm pressure	Muscle cannot be felt due to a thick layer of fat

Suiter, J. (2006) *Body Condition Scoring Sheep and Goats*, Department of Food and Agriculture, Government of Western Australia, Perth, WA, Australia, <http://www.agric.wa.gov.au>